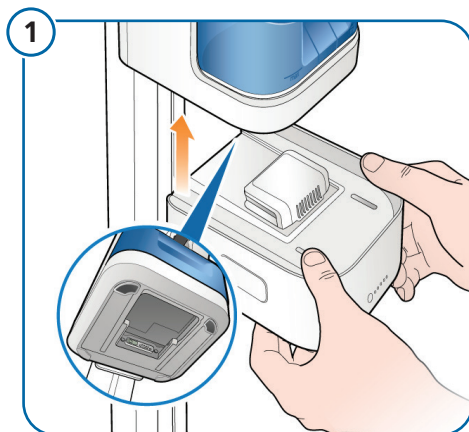


HAMILTON-HF90 Quick Reference

Replacing the battery

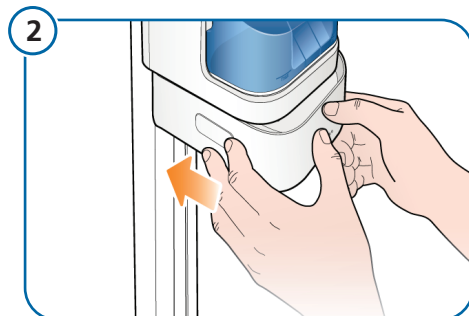


CAUTION

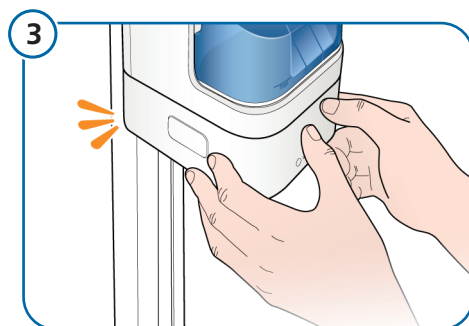
The battery is heavy. Handle with care.

Insert the battery under the device, slightly to the front.

Fit the electrical connector of the battery into the well under the device.

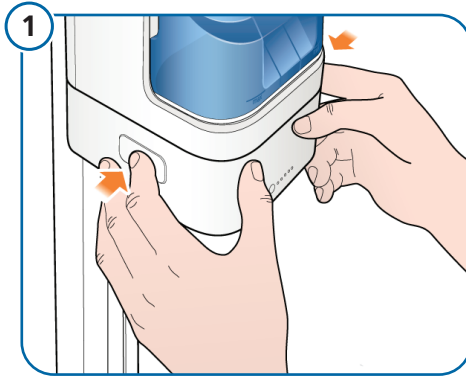


Slide the battery back until it clicks into place.

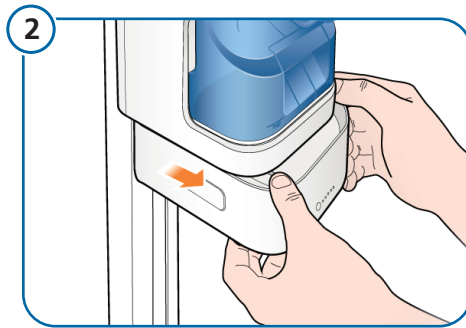


An audible click indicates the battery is locked in place.

Removing the battery

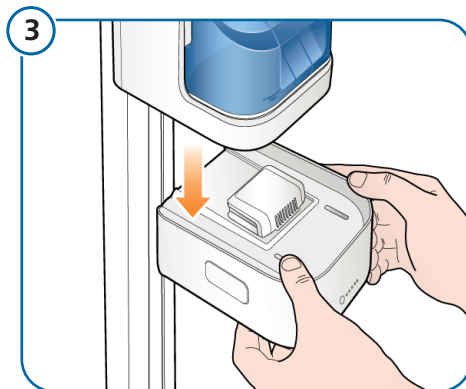


Press the buttons on the side of the battery to unlock it, and start sliding it forward.



Carefully slide the battery forward.

The electrical compartment on the battery will stop it from sliding completely out of the device.



CAUTION

The battery is heavy. Handle with care.

When in position, bring the battery down and out from under the device.