

IntelliCuff® Quick Guide

Alarm silence button

- 1 Press (if appropriate for alarm)
 - ▶ Silence for 2 min

Power button

- 1 ON: Long-press > 3 s
 - ▶ Self test starts
 - ▶ Numbers blink: test successful
 - ▶ After 3 s blinking stops
- 2 OFF: Long-press > 3 s
(only possible when no tube connected)

Lock button

- 1 Lock key pad: Press 2 s
 - ▶ Alarm silence never locked
- 2 Unlock key pad: Press 2 s

Target pressure adjustment

- 1 Press (+) or (-)
 - ▶ Target pressure blinks
- 2 Change pressure with (+) or (-)
 - ▶ After 3 s new setting is applied

Deflate button

- 1 Long-press > 3 s to deflate the cuff
 - ▶ Device beeps
 - ▶ Device applies negative pressure
 - ▶ Pressure reaches 0, device beeps
- 2 Extubate patient
- 3 Turn off the device within 1 min

Hold button

- 1 Long-press 3 s for time-limited hold
 - ▶ Device beeps
 - ▶ Target pressure blinks for 3 s
 - 2 Change pressure with (+) or (-)
 - ▶ After 3 s new setting is applied
- To **STOP** the **hold**, press Hold button again



Device Overview

Alarm types

- Red flash ▶ High priority
 ▶ Technical fault
 Yellow flash ▶ Medium priority



Alarm silence



Cuff system leakage



Deflation in progress



Cuff deflated > 1 min



Time-limited hold active

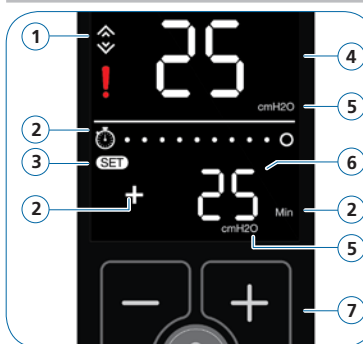


Technical fault



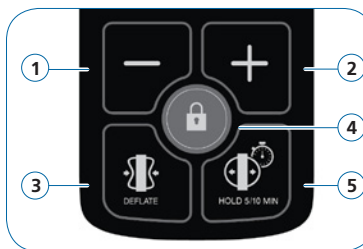
Alarm and power display

- 1 Alarm silence button
- 2 Alarm lamp
- 3 Alarm symbols
- 4 Power On/Off button
- 5 Power symbols



Pressure-related displays and controls

- 1 Pressure trend (increase/decrease) indicator
- 2 Symbols related to time-limited hold (see page 9)
- 3 Displayed when target pressure can be adjusted
- 4 Current pressure
- 5 Unit of measure
- 6 Target (set) pressure
- 7 Adjustment buttons (+/-)



Control panel

- 1 Decrease (-) target pressure
- 2 Increase (+) target pressure
- 3 Deflate cuff
- 4 Lock/unlock control panel
- 5 Perform time-limited hold

See the *IntelliCuff Instructions for use* for detailed information.